



FACT SHEET

SELDON ROAD EXTENSION, PHASE II



Description

The purpose of the Seldon Road Phase II project is to complete the connection from Church Road to Pittman Road. The first phase, completed in 2015, went from Church Road to Beverly Lake Road. Phase II construction will include a new road connection and pathway.

Project Benefits

- Provide an alternate route to the Parks Highway.
- Separated pathway for the full length of the project.
- Increase connectivity and reduce travel times.

Cost

The total estimated cost is \$22 million, with the majority funded by federal highway funds and a match portion provided by the Mat-Su Borough.

Schedule

Remaining activities to finalize include right-of-way acquisition, utility agreements, environmental permits, and construction documents. The team anticipates going out to bid in 2026 with construction in 2027.

Contact Information

Chris Bentz

Project Manager
DOT&PF

907-707-1912, chris.bentz@alaska.gov

Camden Yehle

Public Involvement
Yehle & Associates

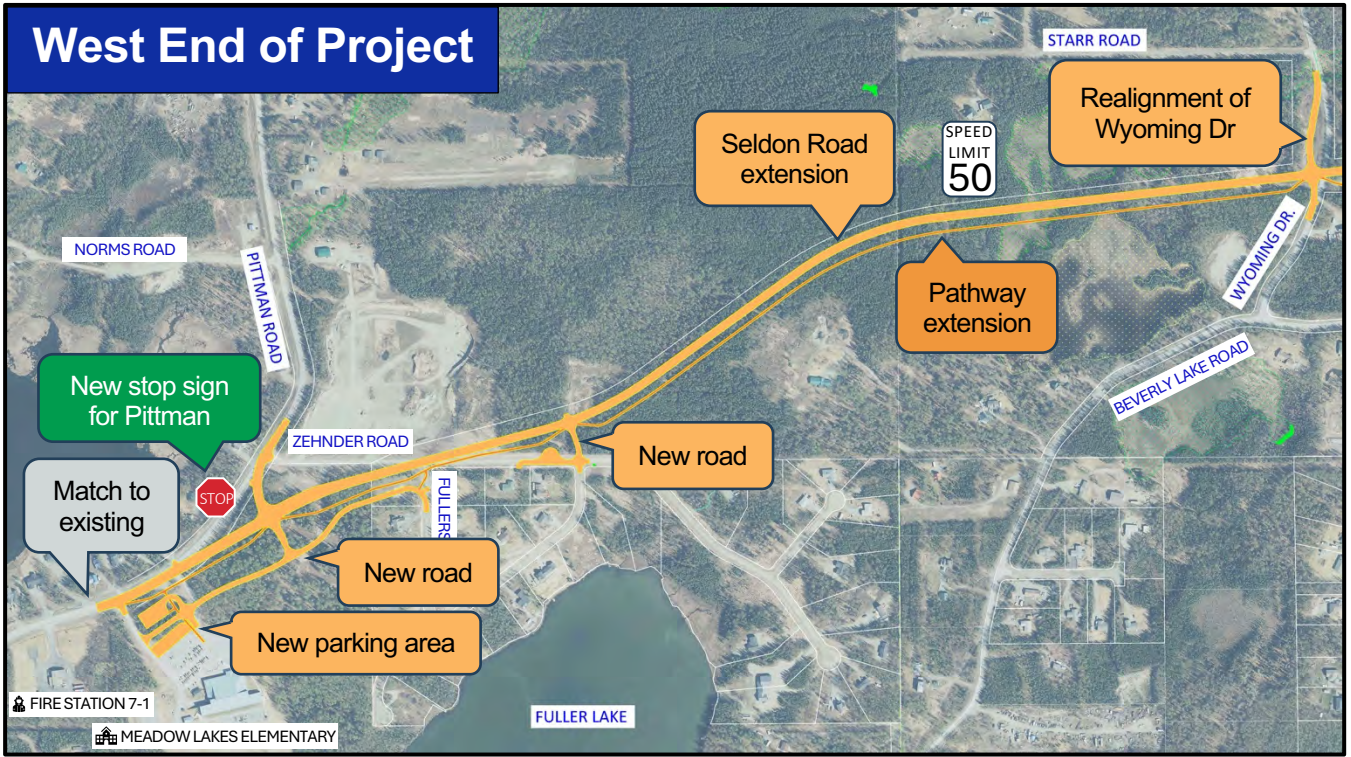
907-346-0506,
camden@yehlealaska.com

Website: www.seldon-phase2.com

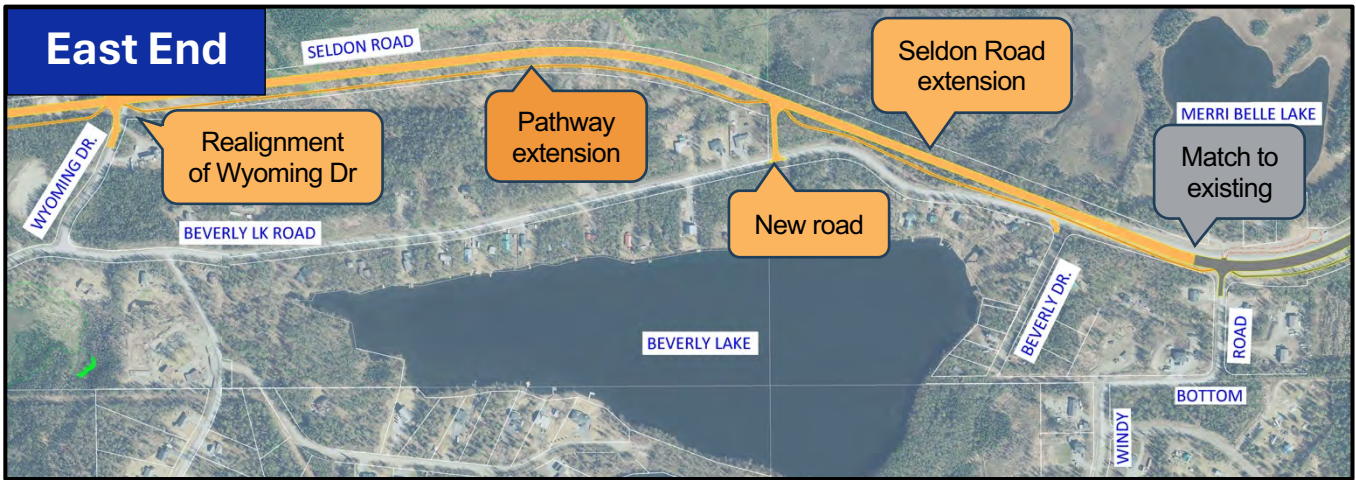
Comment Form

<https://bit.ly/SeldonComment>

West End of Project



East End



Signing and Striping Plan Near Meadow Lakes Elementary

